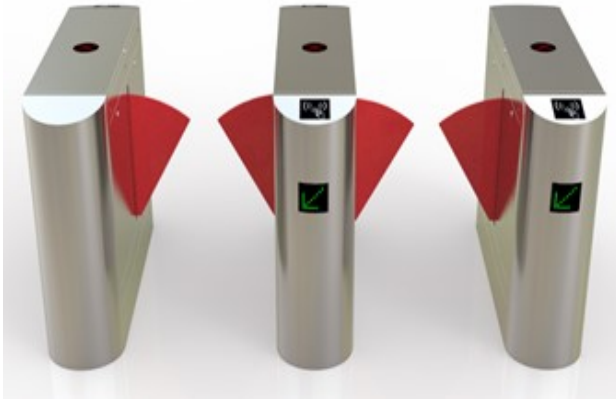


## SYNEL SY-02FL – FLAP gate



### Synel order number -

SY-02FL Side unit – 155080

SY-02FL Center unit - 155081

### Features:

**Circular arc chassis design, with big square LED indicator on the chassis.**

- SY NEL Problem self-recovery and corrective measure ability, convenient maintain and adjust.
- SY NEL Motherboard with high clean sound read chips which could broadcast in light of user's requirement.
- SY NEL Human base model indication function, real time displaying, improve the passing rate and convenient maintain.
- SY NEL Automatic counting indicating passenger's number.
- SY NEL Resetting automatically, auto cancel the pass through and closed barrier in case nothing passes the channel in a setting time.
- SY NEL Anti-pinch function with UPS to satisfy firefighter requires, ensure user's safe.
- SY NEL Break-in, tail, over-pass and reverse alert function in order to keep orderliness and effectively manage.
- SY NEL Standard input/output port, meanwhile leaving a port space for installing RS485 communication, connect and manage the integrated systems through the remote PC.
- SY NEL Super combination capacity, adjustable model on site, adjustable speed of barrier slide, Open signal with memory or without set function.

## Technical specifications:

<b>Power voltage</b>	AC220±10%,50Hz	<b>Drive voltage</b>	DC24V 5A
<b>Pass speed</b>	≤30 person/minutes	<b>Communication port</b>	RS485
<b>Operation condition</b>	-15°C~+60°C	<b>Structure</b>	SS304 Stainless steel
<b>Relative humidity</b>	≤95%,None-condensation	<b>Open direction</b>	Single and Double(optional)
<b>Input signal</b>	12v DC level or 12v pulse>100ms	<b>Gate opening and closing time</b>	0.5s
<b>Working Current</b>	≤2000mA	<b>Material:</b>	SS304 Cover thickness:1.5mm Cabinet thickness:1.2mm
<b>Length of the flap</b>	260mm	<b>Width of passage</b>	≤600mm
<b>Service life</b>	≥5 million times	<b>Dimension (Customized Optional)</b>	1200*300*980m

