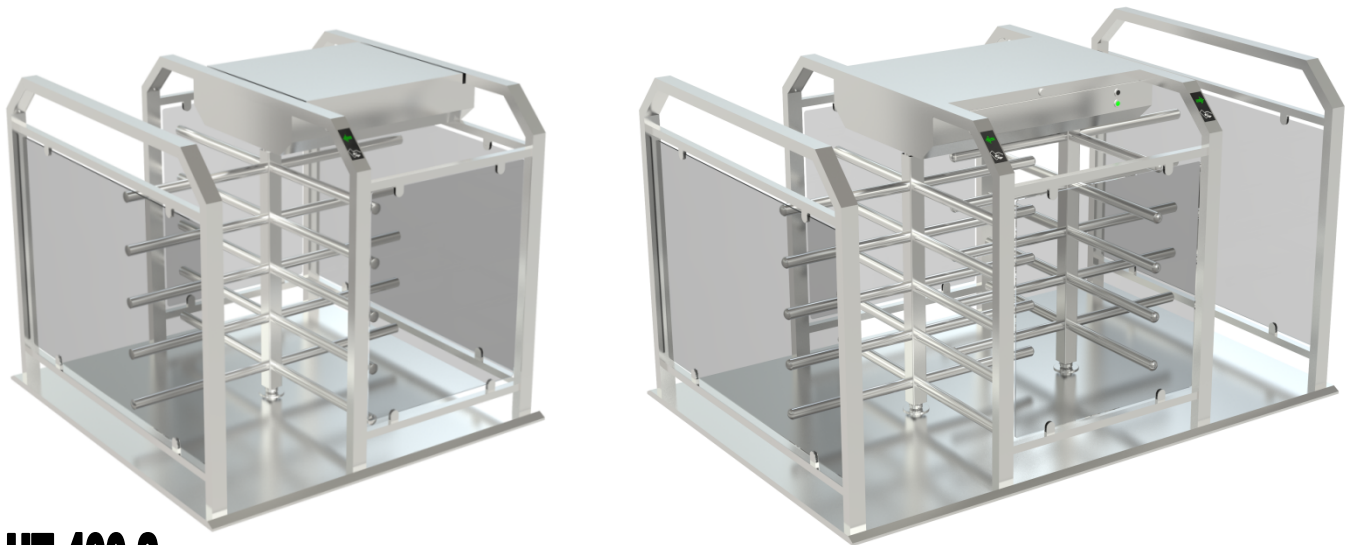


HT 400 TECHNICAL SPECIFICATIONS

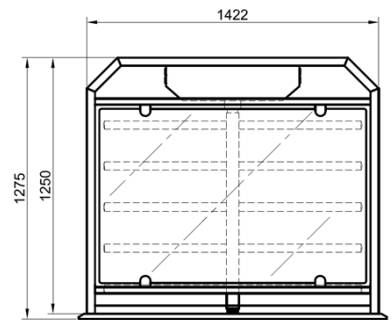
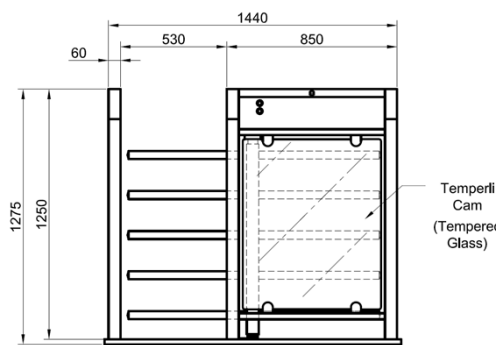
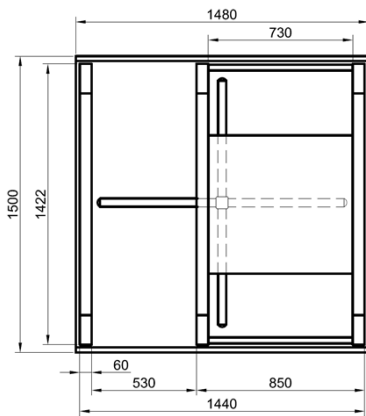


HT 400 S

TOP VIEW

FRONT VIEW

SIDE VIEW

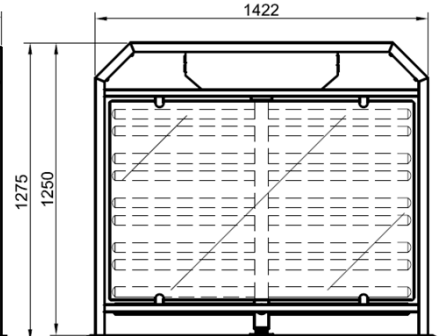
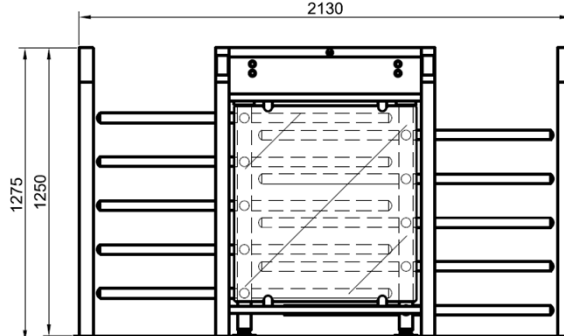
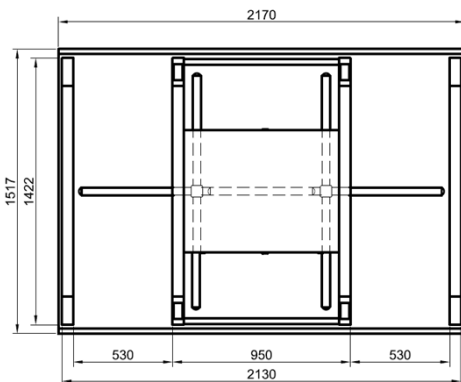


HT 400 D

TOP VIEW

FRONT VIEW

SIDE VIEW



Power Requirements : 110/220-240V. 60/50Hz. AC (%±10) 24V. DC
 -At standby ~11W. During operation ~ 60W. (Single-sided)
 -At standby ~22 W. During operation ~ 120W. (Single-sided)

Dimensions : Single unit : 1500 x 1480 x 1275 mm
 Double unit: 1517 x 2170 x 1275 mm

- Arm Features** : A pair of, four-section (90°) rotors. Each section contains five Ø40mmx2mm, 304-Grade (Opt. 316-Grade) Stainless steel (Opt. Ø42 and Ø45mm) arms.
- Body Features** : Constructed on main carriers, supported by tubular profiles on lateral panels. 304- Grade stainless steel material (Opt. 316-Grade stainless steel).
- Top cover is protected against water for outdoors use, functionally complemented by side separator panels.
- Front panel and side separator panels are made of tempered glass or vertical stainless steel bars depending on choice.
- Indicator & Display Features** : On the front panels, graphical RGB dot matrix status displays of Green Arrow and Red Cross are provided as standard feature.
- Operating Temperature, Humidity, IP Rating** : -20°C to +68°C (Opt. -50°C with heater unit) / RH 95% non-condensing / IP 56 Outdoor Model (Opt. IP 66).
- Control System** : All inputs are opto-coupler protected. Controlled by dry contact or grounding input. Compatible with all access control systems that provide dry contact or grounding outputs. Optional RS232/RS485/TCP IP control module is available.
- Operation:** Manually operated bi-directional system (optional motorized) with dip switch selectable operational modes including controlled access on both-sides, one side free exit and restricted access modes.
- Output Data** : The system provides dry contact passage feedback by relays.
- Emergency Mode** : The rotor spins freely to allow quick passage (Fail-Safe default). Fail lock option is available.
- Flow Rate** : Passage Capacity of Mechanical unit for Manual Version: ~ 60 people/minute;
Nominal: ~10-25 people/minute (for double sided:x2) (Recommended reference figure)
- ❖ Please note that; the above given figures are approximations for one person per walkway or lane.
- Explanatory Note:** The system allows the new passage authorisation in less than ~0.3 seconds. After the passage authorization, the total passage time depends on the pushing and passage speed of the people.
- ❖ Utilisation of different access control units can change the flow rate.
- Standard Features** : LED direction and status indicators.
- Optional Accessories and Applications** : Remote control units (RF or with cable), interface unit for PC, RS485, RS232 and LAN, counter, audio-messaging system, floor mounting plate, coin slot/ intelligent coin system and coin box, card reader pole, seat limiter for stadium solutions, animated indicators, internal battery and charge unit, motor driven unit, heater positive unit, separators, card reader mounted bracket.

**Design and specifications are subject to change without notice.*